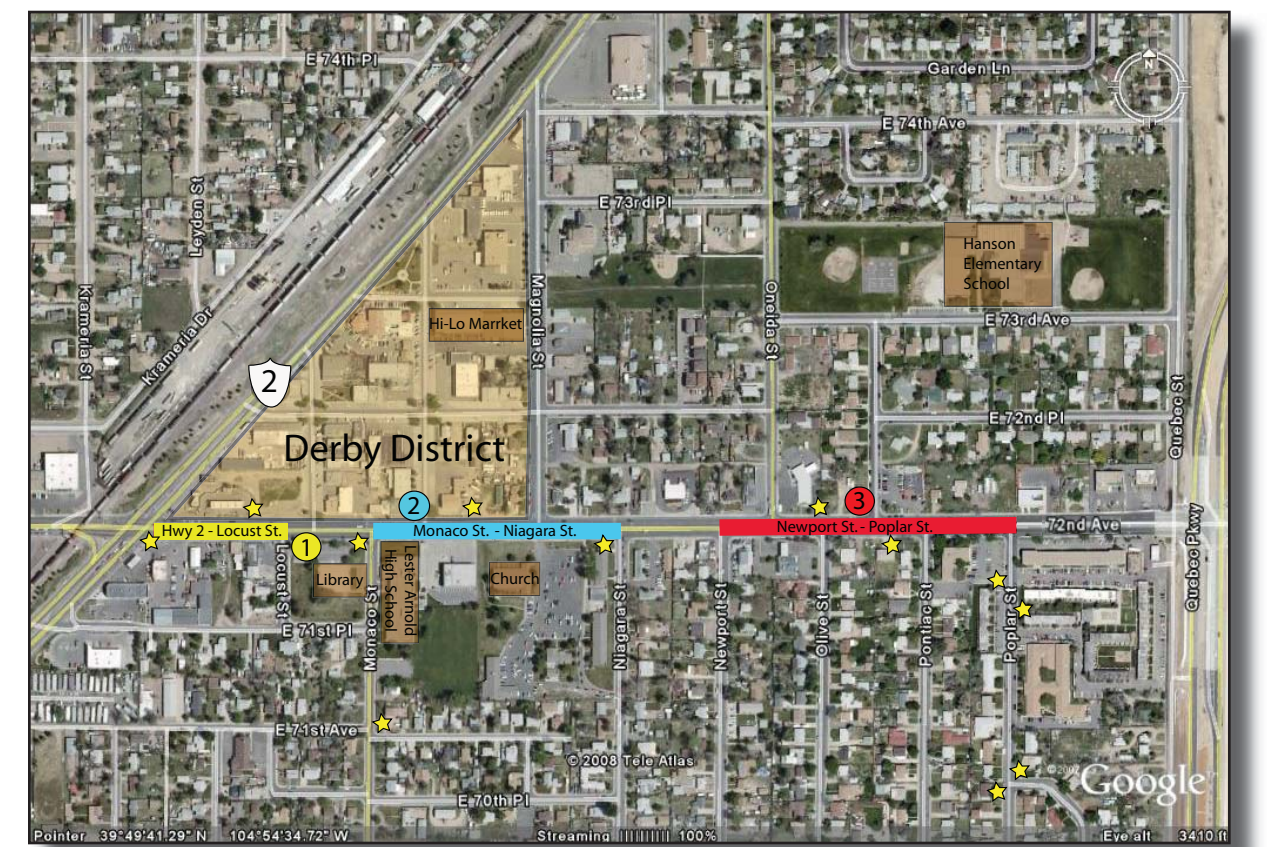
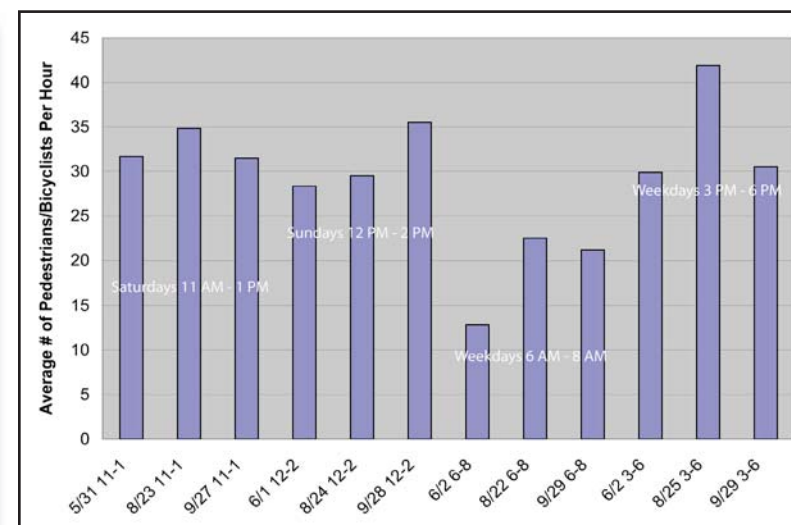
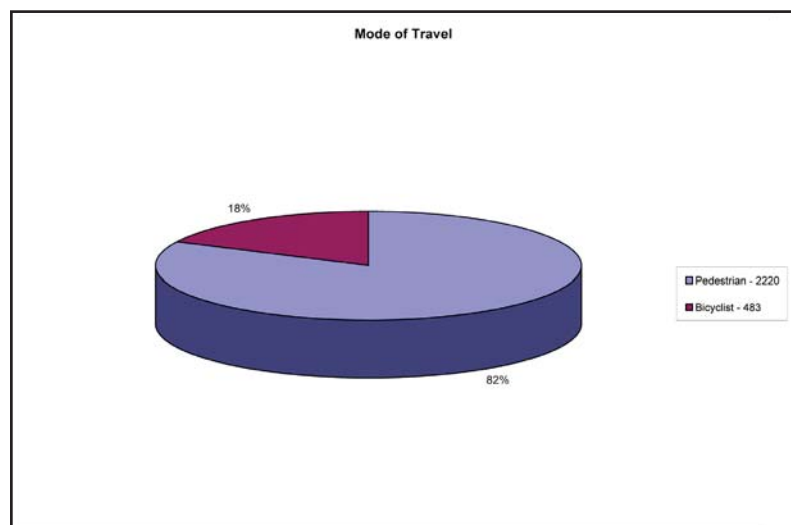
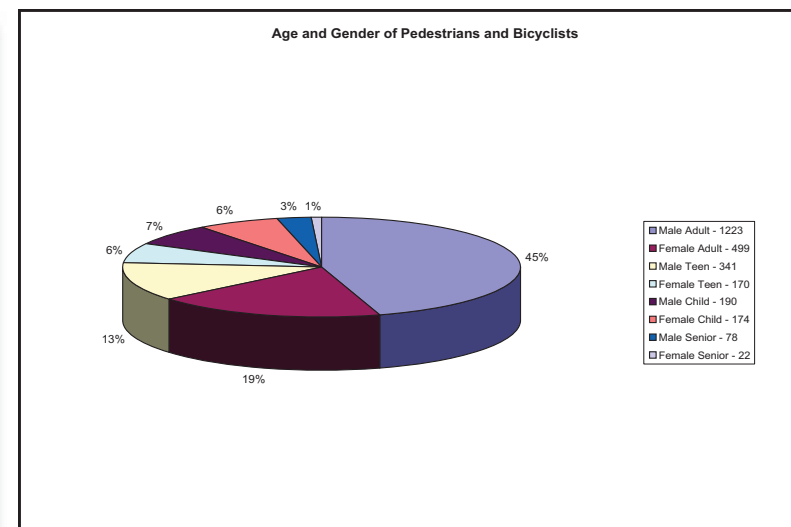
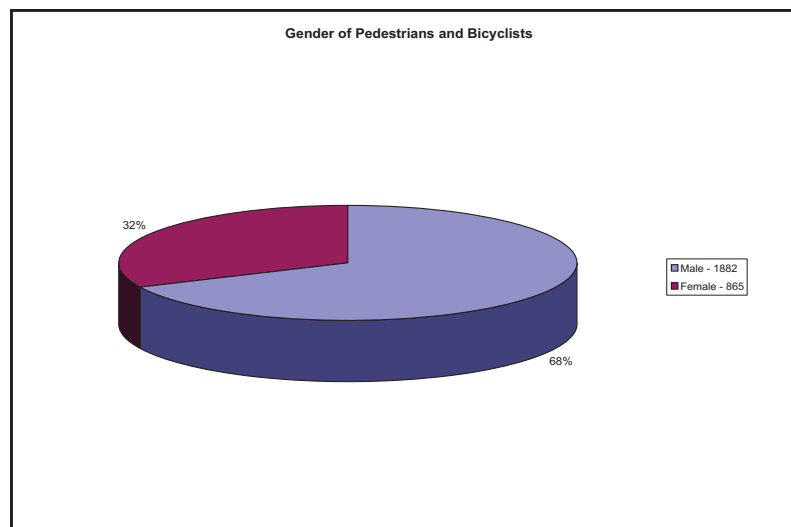
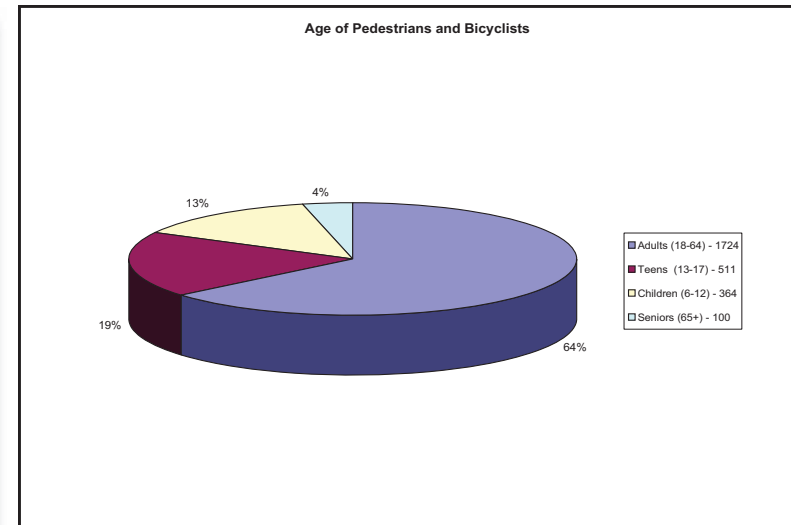
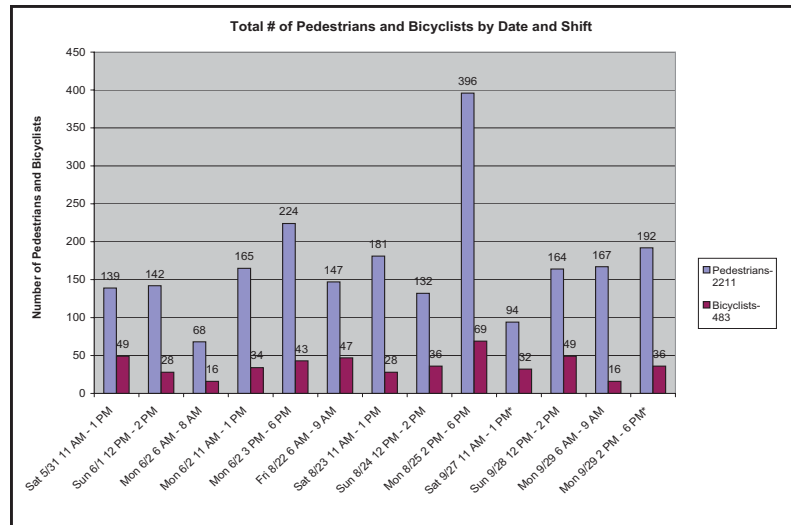


Commerce City, CO

Bike and Pedestrian Survey and Analysis

The Center provided a survey and analysis for a bicycle and pedestrian users along 72nd Street in Commerce City between Highway 2 and Quebec Street. Surveyors recorded the characteristics and actions of pedestrians and bicyclists in three locations along 72nd Street that included time, age, gender, direction of travel, street side of travel, and street crossing and direction. Times were selected to capture the busiest times of day for pedestrian and bicycle traffic, including morning commute to work and school on weekdays, afternoon/evening commute from work and school on weekdays, mid-day on Saturdays, mid-day on Sundays (corresponding with area church times). Surveying took place over the course of ten days in May, June, August, and September. This survey is being conducted prior to a streetscape improvements project to analyze the changes of the pre- and post-use of the street by pedestrians and bikers.



Work was completed by CCCD staff and students.
 Agency Under Contract: Partnerships for Healthy Communities
 Project Contacts: Carol McCallhan, Tri County Health Dept.
 Project Manager: Judith Bergquist
 Student Intern: Jeff Sudmeier, Planner
 Project Started - In Process: May 2008 - Sept 2008
 Funding: Partnerships for Healthy Communities and DOLA Project Funds